

Bembe

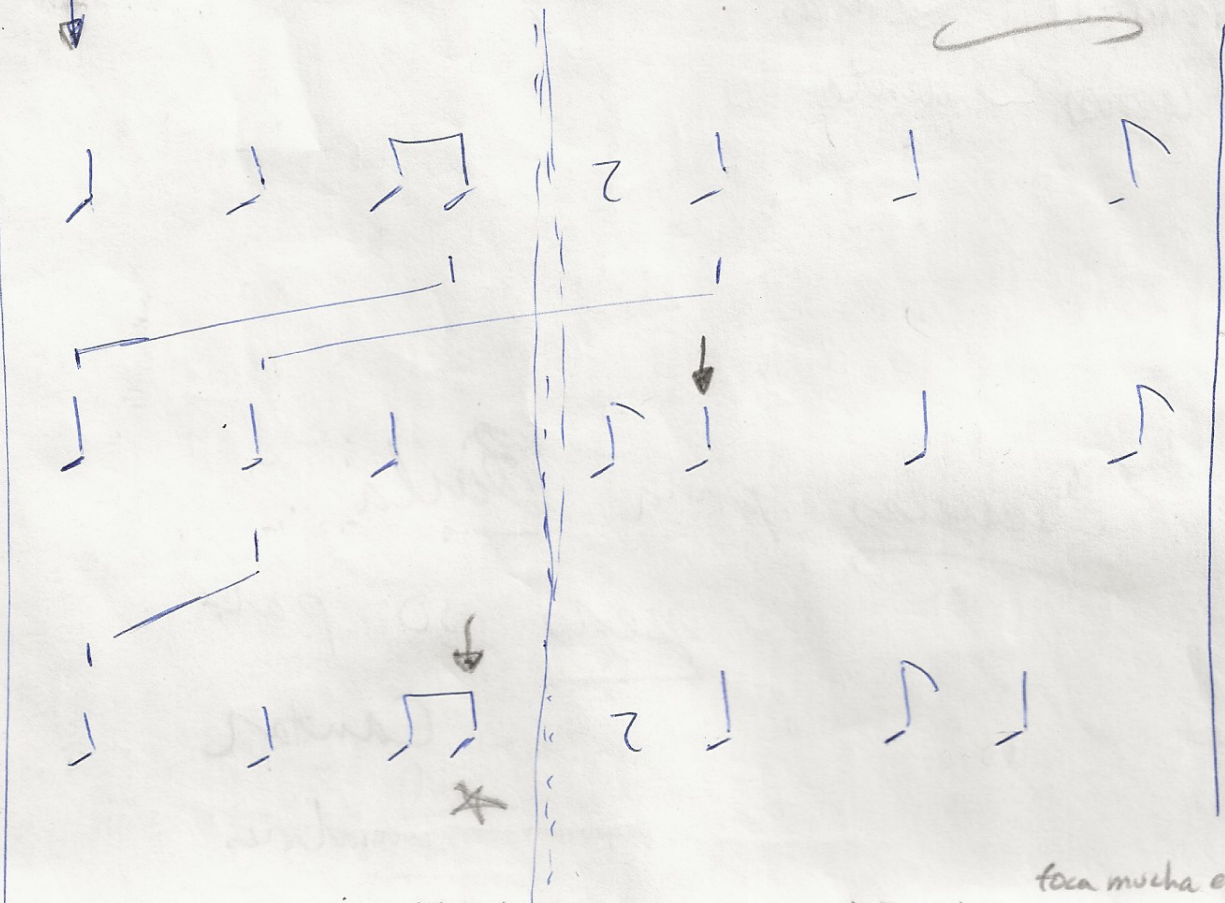
- Baco So ~ Ciudad
- Mula ~ Cargajero
- De Sao ~ Monte ~ se toca mucha en SNTG
- Giiiro ~ Shekere

Guatasa
Campana

Bembe

Bembe
Mula y
Baco so

Bembe
de las
(del Monte)
-guiro



foca mucha en Santiago

BACO SO

MULA

DE SAO

del campo

7-12-19
1605

Quinto

Musical notation for Quinto, including rhythmic patterns and letter-based notation (HT, LL, RR, SS, OO, DD, TT, BB).

* a veces puede
hacer variaciones

25-35
7-12-N

a veces puede

Tres Dos
Llamador

Musical notation for Tres Dos Llamador, including rhythmic patterns and letter-based notation (TS, LR, RR, RL, SS, OO, DD).

1640

Bombo/Salida
CAJA

Musical notation for Bombo/Salida CAJA, including rhythmic patterns and letter-based notation (HTS, LLR, RLR, HT, HO, T, D, HO, BD, O, DB).

1651

IMPROV
TAMBORA (35)

Musical notation for IMPROV TAMBORA (35), including rhythmic patterns and letter-based notation (HTS, LLR, RLR, HT, HO, T, D, HO, BB, O, BB, BT, O, T, B).

7-26-18
1907
@646

0828

7-12 1605 N
PROX 1640

1651
1706

1906-249

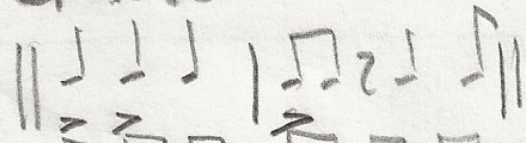
maikel usa ésta bien porque hay
otra campana variaciones

7-26-18
1907

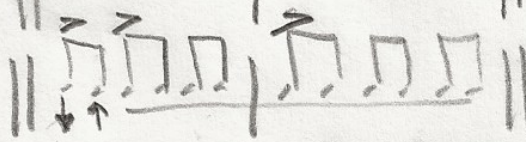
GUIRO

TAMBORA (galleta)
*

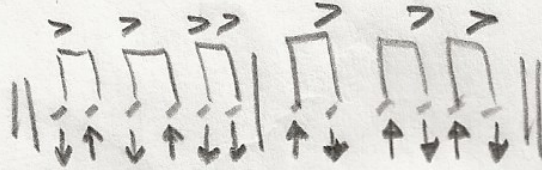
Campana
quataca
/cenceno



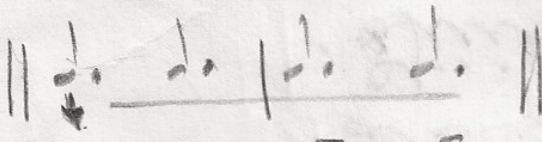
Shekere
caja grande



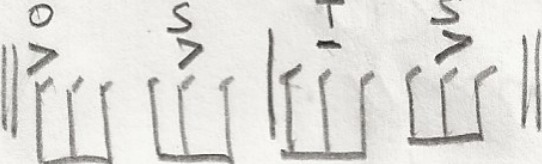
Shekere
pequeño
chicote



Shekere
mediano



Tumbadora



RLR LRL RLR LRL

- Spiritual - Letras
- Baileiros - gente

Escolas para Barla

pers no para

- Cantar
- Danças